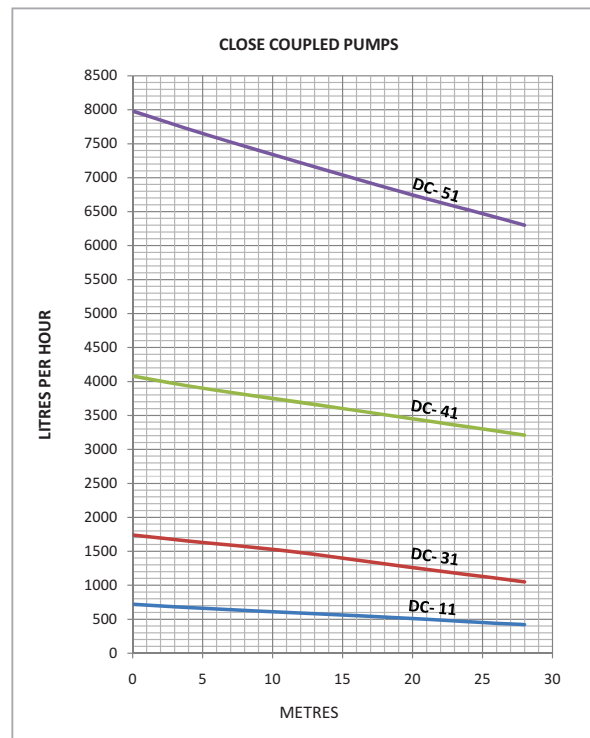
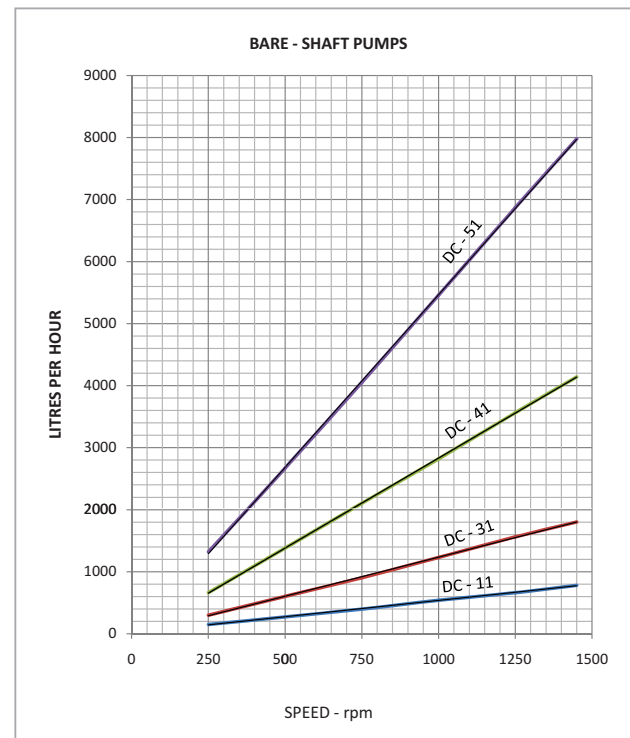
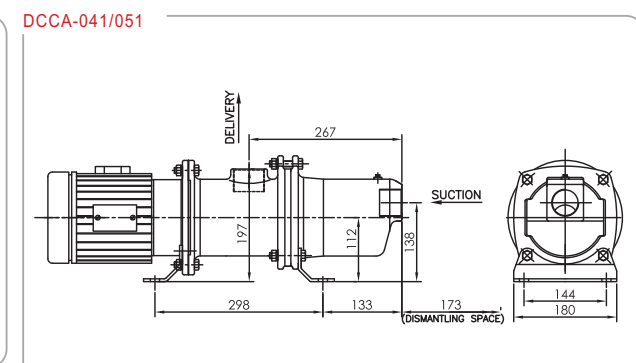
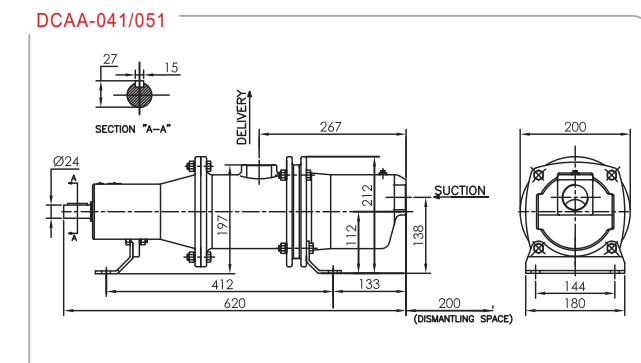
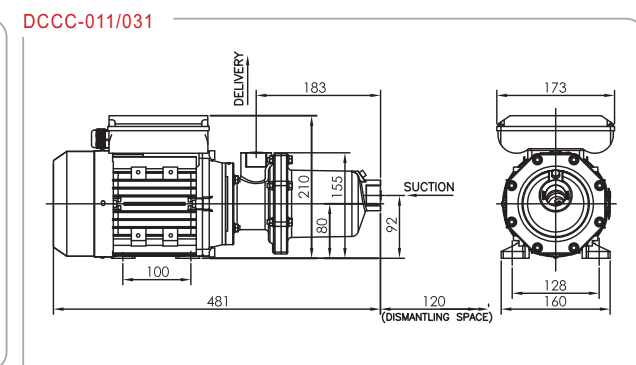
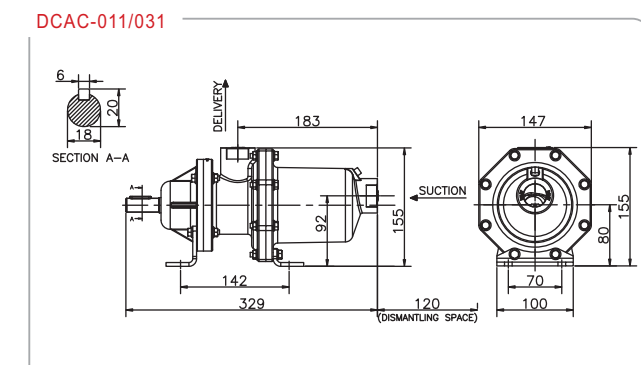


PERFORMANCE CURVES



Dimensional details



ALL DIMENSIONS ARE IN MM

Pump Type	Port Size	Pump Weight Kgs (approx.)		Motor Rating (KW)	Max. Suction Lift
		Bare Shaft	Closed Coupled		
DC-11	1" BSP	2.6	10.3	0.37	7.5 Meter
DC-31	1" BSP	3.0	10.7	0.37	6.5 Meter
DC-41	1.5" BSP	28.1	31.0	0.75	5.5 Meter
DC-51	1.5" BSP	28.5	31.5	1.1	4.5 Meter

*Overrated motors



Corporate Office & Export Warehouse



Roto Manufacturing Plant



Manchester Office & Warehouse



Melbourne Office & Warehouse



ROTO PUMPS LTD.

Marketing Head Office
Roto House, 13, Noida Special Economic Zone,
Noida - 201305, INDIA
Tel.: +91 120 3043901-4 Fax: +91 120 3043928
Email: contact@rotopumps.com

Branch Offices and Warehouses
United Kingdom
Unit 1 St Elizabeths Park, Grey Street, Denton,
Manchester, M34 3RU
Tel.: +44 161 4775511 Fax: +44 161 4747900
Email: sales@rotopumps.co.uk

Australia
26, Deans Court, Dandenong South, Victoria 3175
Tel.: +61 3 97945200 Fax: +61 3 97945900
E mail: melb@rotopumps.com.au

www.rotopumps.com

Infrastructure

Roto has strong roots in manufacturing engineering & has over the years been able to develop efficient manufacturing processes both in the field of metal cutting and rubber processing.

The present manufacturing infrastructure comprises of a facility spread over 20,000 sq.mt and deploys all modern machine tools. It has created multiple assembly sections in terms of pump sizes to meet the growing demand for its products.

The testing infrastructure comprises of both water and oil test bed facilities. The testing facility is equipped to comply with VDMA and API 676 standard. The facility can test pumps with capacity upto 1000 m3/hr and has power available upto 500KW.

Marketing & Distribution Network

Roto has rich experience of 40 years of moving fluids positively; this caplion has been realized by Roto not only in words but also in spirits. Customer Satisfaction has been one of the strongest ideologies at Roto.

While Roto enjoys a market leadership position in India, it has also been able to establish its overseas marketing offices and warehouses in Australia and United Kingdom to cater to the large European Market. It has also established prominent distributors all over Europe, Middle East, South East, Far East and North & South America too.

Quality Certifications and Registrations

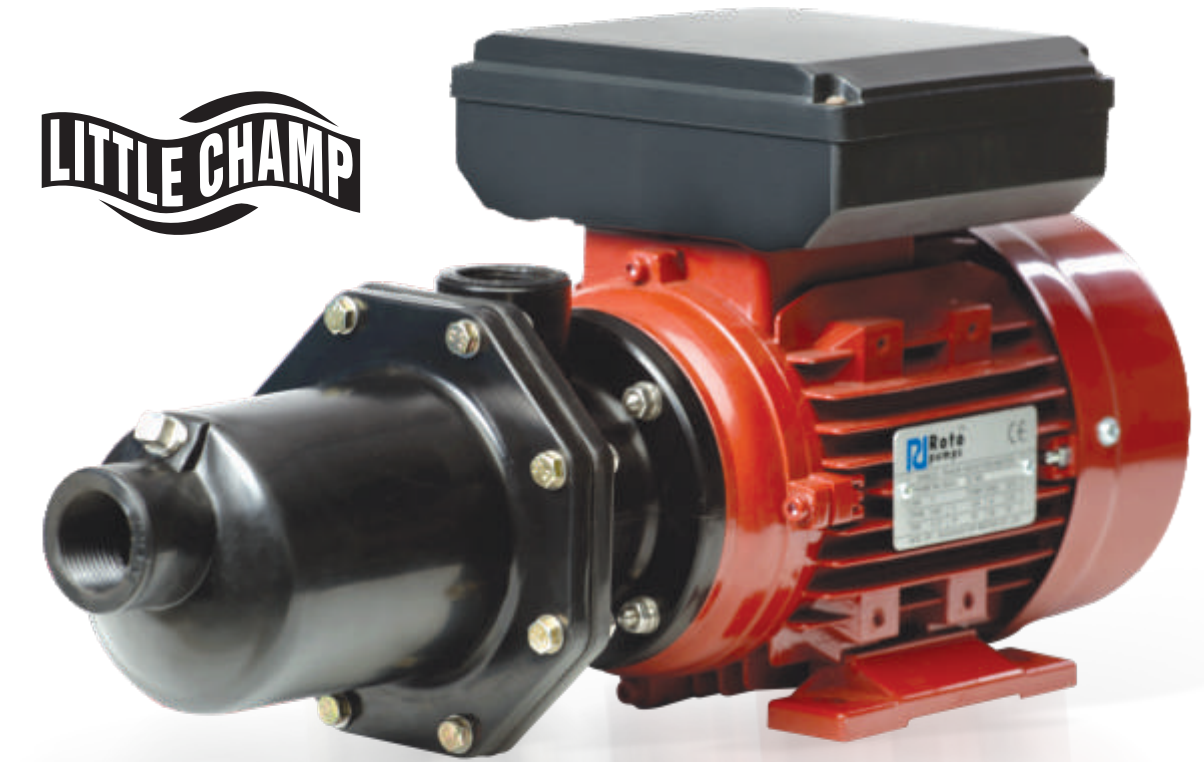
Roto is known for conducting its business with integrity, for delivering high-quality pumps on time and within budget, and for our unwavering commitment to safety, health, and the environment. Our identity is derived from our people, processes, and technology.

Roto's manufacturing units are certified for conformance to the ISO 9001-2008 quality surveillance systems. More recently, we have been accredited with ATEX Certifications. We are also in the process upgrading to ISO 14001 and OHSAS 18001 (Occupation Health and Safety Environment)

Research and Development

Roto enjoys the legacy of being amongst the leading Progressive Cavity Pump manufacturers and processes deep & sound designing capabilities, which has been developed over the last 4 decades. R & D activity within Roto has led to the launch of numerous new products with some of the most distinguished features, high degree of reliability & immaculate product performance.

Roto has a battery of licenses of 3D designing software such as solid works and also deploys advances software for flow analysis, mechanical strength and cost optimisation.



Task master for light industrial and domestic applications



DC Little Champ Pump

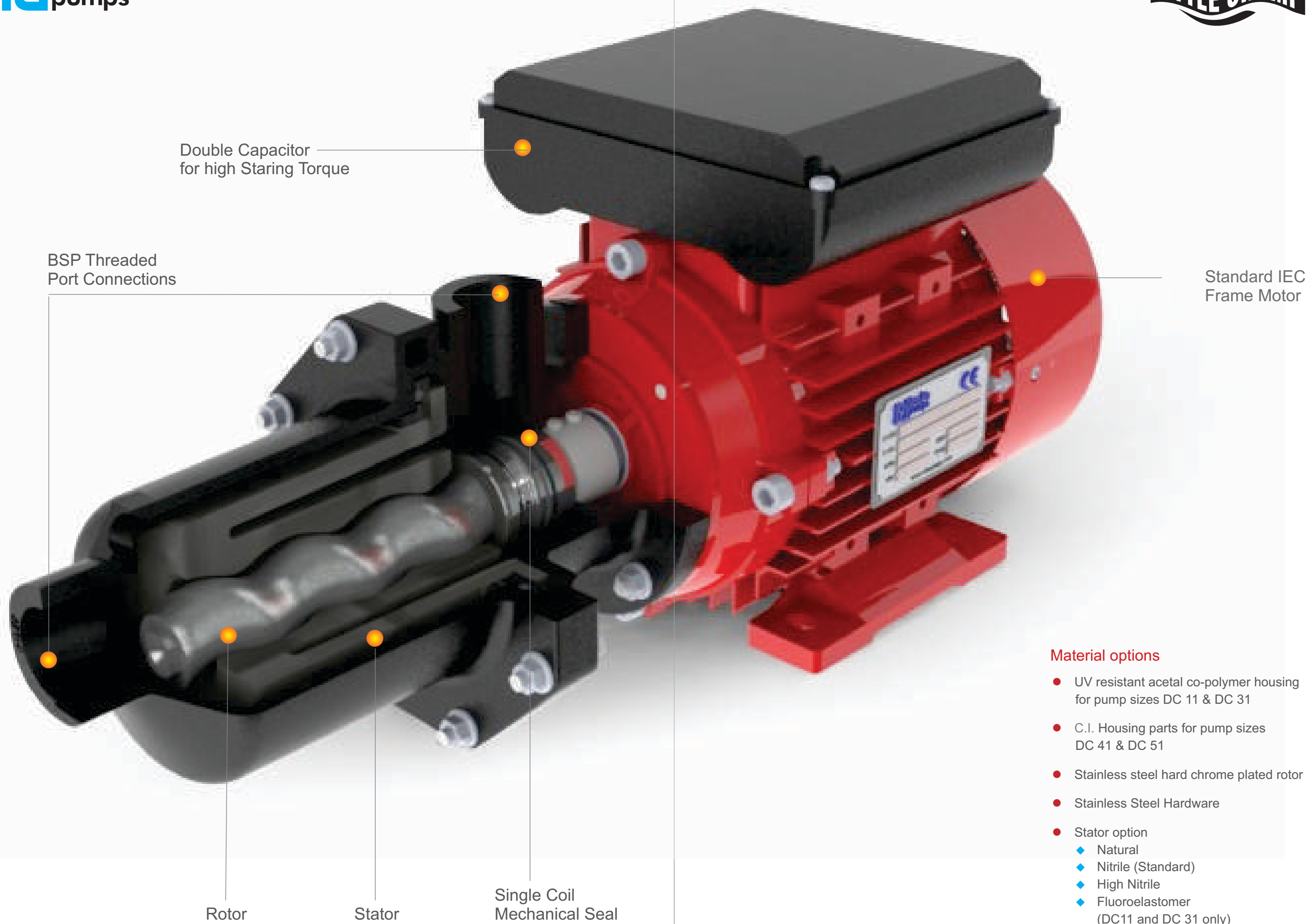
Roto's Little Champ pump range has been developed for general purpose pumping applications that demand high performance and durability. These Multi Taskers can be used for dosing, transfer and injection duties for a wide variety of fluids. These pumps are available in 4 sizes with flow rates, ranging from 780 L/Hour – 7980 L/Hour and pressures upto 2.8 bar.

Distinctive Design Features and Benefits

- Flow is directly proportional to the speed
- Excellent Suction lift capabilities
- Low shear and linear flow
- Can handle liquid with varying viscosity
- Can handle liquid with fine solids
- Minimal impact on efficiencies with varying heads

Typical applications

- Transfer and dosing of Chemicals and alkalies
- Transfer duties in food processing, winery and vegetable oils
- Drainage of septic tanks
- Feeding to Oily water separators
- Drawing water from wells, creeks or shallow bores
- Hosing down of cattle and stock sheds
- Automatic water pressure systems
- Brine injection
- Feeding ponds and sprinkler systems
- Diesel Transfer
- Handling Surfactants and detergents



Material options

- UV resistant acetal co-polymer housing for pump sizes DC 11 & DC 31
- C.I. Housing parts for pump sizes DC 41 & DC 51
- Stainless steel hard chrome plated rotor
- Stainless Steel Hardware
- Stator option
 - ◆ Natural
 - ◆ Nitrile (Standard)
 - ◆ High Nitrile
 - ◆ Fluoroelastomer (DC11 and DC 31 only)